

ASC of Montana 2024

Frenchtown Fling



4 All Breed Stock Dog Trials 2 Farm Trials

A weekend of ASCA® stock dog competitions
Hosted by the Australian Shepherd Club of Montana
June 14-Farm Trial
June 15-16 4 Arena Trials including Post Advanced
Frenchtown, MT

Pre-entries open May 3rd and close May 13th

- Two (AM & PM) Farm Trials
 - Friday—Farm Trial (cattle and sheep)
- Two (AM & PM) arena Stock dog trials each day
 - Saturday -- Course G (cattle, sheep, ducks)
 - Sunday – Course H (cattle, sheep, ducks)
- Post Advanced will follow Arena Trials on Saturday and Sunday
 - Saturday--Course A (Post Advanced cattle and sheep)
 - Sunday—Course A (Post Advanced cattle and sheep)
- The trial will be held at facilities located at Miller's Arena in Frenchtown, MT
- Handlers Meeting each day at 7:30AM
- **JUDGES: Kim Schneider and Devona Pierce**

5 Silver Buckles Offered!!

1 Farm Trial and 4 Arena Trials

	Pre-entries	Post-entries
Farm Trial		
Sheep: 5 head of hair or wool sheep	\$65.00	\$70.00
Cattle: 3-5 head of cattle	\$75.00	\$80.00
Arena Trial		
Ducks: 5 head of Khaki Campbell ducks	\$35.00	\$40.00
Sheep: 5 head of hair or wool sheep	\$45.00	\$50.00
Cattle: 3-5 head of cattle	\$60.00	\$65.00
Post Advanced Trial		
Sheep: 5 head of hair or wool sheep	\$45.00	\$50.00
Cattle: 3-5 head of cattle	\$60.00	\$65.00

Pre-Entry Deal

- Super weekend discount: **Enter all 6 trials, all classes for \$740.**
- Pre-entries close on May 13th

Lunch will be offered during an afternoon break all three days. Food is catered and homemade for the event. Lunch tickets available in advance. Make separate check payable to ASC of Montana. \$10.00/Day

Course Director: Jim McKay
Trial Secretary: Susie Gonaver

mckay19650@msn.com
sgonaver@gmail.com

406-546-4069
858-414-5752

General Information for ASC of MT Events

These shows are ASCA® sanctioned by the Australian Shepherd Club of Montana. All ASCA® rules apply. ASC of Montana and their members *assume no responsibility for any loss, damage, or injury sustained by an exhibitor, handler, dog, property, child or spectator.* No entry fee will be refunded if the show cannot open or be completed due to riots, civil disturbances, acts of God, public emergencies, or other events beyond the control of ASC of MT. Entries must be made on the official ASCA® entry forms. (Attainable at: www.asca.org – select: *Forms and Rulebooks*)

Proof of rabies vaccination may be required.

- An official wait list shall be maintained.
- Run order will be determined prior to trial by random draw and posted prior to start of trial.
- Bitches in season will run in draw order.
- **Bitches in season will remain crated when not competing and kept away from spectator area.**
- All dogs must be on leash or crated when not competing.
- Changes and/or substitutions, other than natural division progressions, must be submitted to the trial secretary in writing the evening before the trial.
- Move-ups are allowed, but they may not be recorded correctly unless written notification is provided to the trial secretary prior to the start of the trial.
- Any change requests, including substitutions, must be submitted to the trial secretary in writing the evening before the trial.
- Entry fees will be refunded only when a dog has been certified by a licensed veterinarian as unable to compete due to sickness or injury. Owner will be responsible for all vet fees.
- Pre-entry deadline: Postmark no earlier than May 3rd, 2024, and no later than May 13th, 2024. No telephone, facsimile, email, or incomplete entries will be accepted. All entries must be on ASCA® entry forms with proper fees included.
- Please use one entry form per dog.

- Note that the AM or PM designation on a trial does not indicate or restrict the order in which the trials will be held.
- Non-ASCA® dogs may enter the stock trial without a tracking number, however, only those with a tracking number will be awarded ASCA® titles upon completing title requirements.
- Please fill out forms legibly—**especially your email address. You must provide an email address to receive updates. This is the only way you will be notified. A confirmation email will be sent notifying you of the status of your entry.**
- Run limits and judging assignments are subject to change.
- Selling runs will not be permitted.
- If the trial is full and you wish to sell a run, the transaction must be handled by the trial secretary. All offers to buy or sell runs must be submitted in writing at least one hour before the trial starts. No exceptions.
- Please clean up after your dogs. Clean up tools and receptacles are placed at strategic locations around the trial site.
- All ASCA® Rules will be strictly enforced.
- In order to have ASCA® qualifying legs tracked and to receive ASCA® titling certificates each non-ASCA® registered dog will be required to have an ASCA® tracking number. Tracking forms are available at: www.asca.org. Chose link to *Forms and Rulebooks*.
- No scoresheets will be given out prior to awards. If you will not be attending awards you can provide a self-addressed stamped envelope and your score sheets will be mailed or provide an envelope with your name on it to pick up the following day at check-in.

SCHEDULE

		Course	CATTLE	Course	SHEEP	Course	DUCKS
Friday June 14, 2024	AM	Farm	Kim Schneider	Farm	Devona Pierce		
Friday June 14, 2024	PM	Farm	Devona Pierce	Farm	Kim Schneider		
Saturday June 15, 2024	AM	G	Kim Schneider	G	Kim Schneider	G	Devona Pierce
Saturday June 15, 2024	PM	G	Devona Pierce	G	Devona Pierce	G	Kim Schneider
Saturday June 15, 2024	PM	PA/A	Devona Pierce	PA/A	Devona Pierce		
Sunday June 16, 2024	AM	H	Devona Pierce	H	Devona Pierce	H	Kim Schneider
Sunday June 16, 2024	PM	H	Kim Schneider	H	Kim Schneider	H	Devona Pierce
Sunday June 16, 2024	PM	PA/A	Kim Schneider	PA/A	Kim Schneider		

STOCK

5 head per run Ducks, 5 head per run Hair sheep, and 3-5 head per run Beef Cattle. Owners of dogs will be held responsible for all injuries to livestock during their runs. Replacement costs are: \$35.00 per duck, \$200 per sheep, and market price per cow unless posted otherwise at time of trial.

DAILY AWARDS

- Ribbons will be awarded 1st through 4th place.
- Color Ribbons for qualifying scores per class and division.
- Rosette Ribbons for High in Trial by division and High combined by class.
- Ribbons will be given out at the end of each day.

Other ribbons/rosettes or prizes may be awarded.

ASCA® Sanction Pending

WEEKEND AWARDS

- Rosettes will be awarded for
 - High in Trial Cattle, Sheep and Ducks

Other ribbons/rosettes or prizes may be awarded.

BUCKLE AWARDS-5 SILVER BUCKLES OFFERED

- **Farm Trial Champion**
- **Most Promising Started Aussie**-Must enter at least 4 of each class of stock. Top four scores of each class of stock will be used for calculation.
- **High Combined WTCH Aussie**-Aussies that have earned their WTCH before the trial begins.
- **High Combined WTCH Other Breed**-Other breeds that have earned their WTCH before the trial begins.
- **High Combined Non-WTCH**-Dogs of any breed that have not yet earned/qualified for a WTCH title prior to the first day of the event.

*Rules for weekend Buckle Awards

- ALL Farm Trial scores will be used in Farm Trial Champion calculations.
- ALL arena scores will be used in High Combined calculations.
- To be eligible for an overall combined buckle, the dog must enter all class of stock each trial
- To be eligible for an overall combined buckle there must be two or more dogs in the category to be eligible for a buckle (all classes of stock each trial)
- **Owners must designate non-WTCH or WTCH buckle.**
- The most promising Started Aussie does not require entry in all trials, but the dog must be entered in all classes of stock in Started in at least four trials. Only started scores will be counted toward the total of Most Promising Started Aussie.

ENTRIES

Acceptance of Entries: All entries will be put in order of postmark date. A waiting list will be maintained if the trial fills by postmark date of entry. Entries postmarked after May 13th or received before June 15th will be considered day of show entries. Day of show entries will be accepted until the trial fills. Once the trial fills, additional entries will be put on a waiting list as per ASCA rules unless the applicant requests otherwise. Applicants preferring an immediate return of their application and fees if the trial is full should include instructions with their application.

Divisions will run for all classes of stock: Advanced, Open, Novice, Junior, and Started. Post Advanced will run for cattle and sheep only. Farm will run for cattle and sheep only.

Be sure to fill out ASCA® stock trial entry forms completely (one per dog) and indicate AM trial or PM trial, and cattle/sheep/ducks, where applicable on one entry form. All entries must be accompanied by payment. Please write legibly! Incomplete or illegible entries will not be accepted. ASCA Entry Forms: <https://www.asca.org>

ASCA® Sanction Pending

Include checks payable to ASC OF MT with entries and mail them to:

ASC of Montana
ATTN: Susie Gonaver
126 Buckskin Run
Whitefish, MT 59937

Additional Information for Spring Turnout

FOOD:

Special LUNCH daily on Break: \$10.00 per person. Make checks payable for Lunch to ASC of Montana.

In Frenchtown (approximately four miles from the trial site) there are eateries serving Breakfast, Lunch and Dinner. There is also a Grocery Store.

CAMPING:

There will be limited camping on site with no hookups. (\$10.00/night) Include dates and fees with application. **Make checks for camping payable to Michael Miller.**

There are 3 commercial campgrounds 8 miles east of the trial site.

- Jelly Stone: 800-318-9644; 406-543-9400
- Jim and Mary's RV and Camping: 406-549-4416
- Outpost Campground: 406-549-2016 And closer to Missoula there is a KOA campground with cabins (yes that is what they call them!) 800-562-5366; 406-549-0881

HOTELS in Missoula:

- Days Inn: 8600 Truck Stop Rd. 406-721-9776
- Quality Inn & Suites: 4545 N Reserve St 406-203-1341
- La Quinta: 5059 N Reserve St. 406-549-9000
- Hampton Inn: 4805 N. Reserve St. 406-549-1800
- Super 8: 4703 N Reserve St. 406-549-1199
- Motel 6: 3035 Expo Pkwy. 406-549-6665
- My Place Hotel: 5951 Expo Pkwy. 406-926-1001
- Grant Creek Inn Best Western: 5280 Grant Creek Rd. 406-543-0700
- Wingate: 5252 Airway Blvd. 406-541-8000

Check to see what arrangements they provide for pets.
There are no housing accommodations in Frenchtown.

LOCATION:

Miller's Arena, 16315 Touchette Lane, Frenchtown, MT.

ASCA@ Sanction Pending

DIRECTIONS:

Coming from Spokane on I-90 (headed east): Take the Huson exit (85). Turn left off the exit ramp and go over I-90 and then make a right onto the frontage road. Continue on frontage road for about 2.5 miles, take a left onto Touchette Lane and go .4 miles to Fox Hill Dr. Take a left and park.

Coming from Missoula on I-90 (headed west): Take the French Town Exit (89) then turn right off the exit ramp and go to the Stop sign. Then make a left onto the frontage road and continue about 2.2 miles, passing Frenchtown Pond State Park. Take a right onto Touchette Lane and go .4 miles. Turn left onto Fox Hill Dr. and park.

VETERINARY SERVICE:

There will be no Vet on Site at Millers Arena

Emergency 24 Hour Vet Clinic

Sentinel Veterinary Specialists and Emergency
1704 S Reserve St, Missoula, MT 59801
(406) 218-2800

ASCA® Sanction Pending

ASC OF MONTANA FARM TRIALS

June 14th, 2024, AM/PM SHEEP

Total 130 points

- Time limit 15 minutes. 5 minute and 3 minute alerts
- Set out dog will be used
- Run order day of show
- 10 Runs AM and 10 Runs PM
- Ties: AM-Ties are broken by scores on Tasks 1 & 6 (gather and drive/hold) PM-Ties are broken by scores on tasks 1 & 7 (gather and drive/hold)

Sheep Farm Trial AM Description

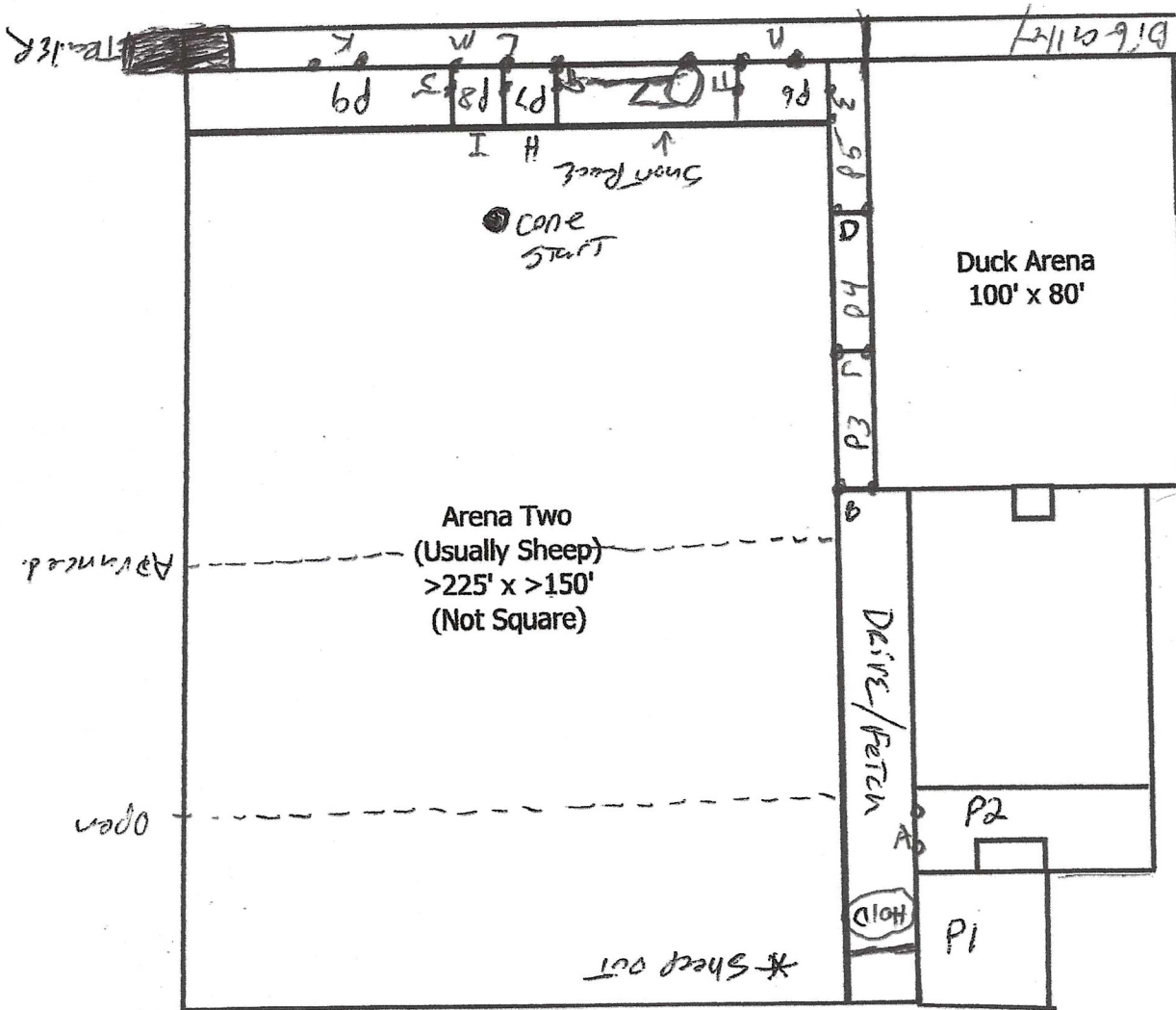
1. Start at cone in sheep arena for gather. Sheep set out with dog. Open handler can use open handler line. Advanced handler will use advanced line for gather to pen 7. **20 POINTS**
2. Gate sort 3 marked sheep into race chute pen. Open can sort 3 and then add the 2 back and take all 5 to race and run down chute and check for problems then back to pen 7. Advanced must sort 3 marked and move them to the race and hold in the chute then return to pen 7 and get the remaining 2 and move them into the race and then the chute. Then run all 5 together down the chute, check for problems and then return them to pen 7.
SORT WORK 25 POINTS; CHUTE WORK 20 POINTS
3. Move sheep from pen 7 to pen 8 then move from pen 8 to pen 9. **10 POINTS**
4. Move sheep from pen 9 to big alley and down to trailer load. Load and close gate then open and move down big alley and into pen 6. **20 POINTS**
5. Move sheep from pen 6 to pen 5; then move them from pen 5 to pen 4; then move them from pen 4 to pen 3. **15 POINTS**
6. Remove sheep from pen 3 and drive them to the hold point. Open can parallel drive advanced must drive to hold. After hold is signaled then move sheep into pen 2 to join used flock. Time stops when gate is closed. **20 POINTS**

Sheep farm trial PM description

1. Start at cone in sheep arena for gather. Sheep set out with dog. Open handler can use open handler line. Advanced handler will use advanced line for gather to pen 8. **20 POINTS**
2. Move sheep from pen 8 to pen 9. **5 POINTS**
3. Move from pen 9 to big alley and down to trailer load. Load and close gate then open and move down big alley and into pen 6. **20 POINTS**
4. Gate sort 3 marked sheep into race chute pen. Open can sort 3 and then add the 2 back and take all 5 to race and run down chute and check for problems then put back in pen 7. Advance must sort 3 marked and move them to race and hold in chute then down to pen 6 and get the remaining 2 and move into race and chute then run 5 together down chute to check for problems and empty to pen 7. **SORT WORK 25 POINTS** **CHUTE WORK 20 POINTS**
5. Move from pen 7 to pen 8 then move to pen 9 and down big alley to pen 6. **10 POINTS**
6. Move from pen 6 to pen 5 then move from pen 5 to pen 4 then move from pen 4 to pen 3. **10 POINTS**
7. Move from pen 3 and drive to hold. Open can parallel drive advanced must drive to hold. After hold is signaled then move sheep into pen 2 and return sheep to used flock. Time stops **20 POINTS**

Total 130 points

- Time limit: 15 minutes. 5 minute and 3 minute alerts
- Set out dog will be used
- Run order day of show



GATES

A - 16'

B,C,D,E,N,K = 8'

F,G,L,M,J = 4'

H,I = 12'

Duck Arena 100' x 80'

SHEEP ARENA 146' X 230'

PEN 1 = 24' X 24'

PEN 2 = 20' X 35'

PEN 3 = 8' X 30'

PEN 4 = 8' X 30'

PEN 5 = 8' X 40'

PEN 6 = 16' X 24'

PEN 7 = 12' X 16'

PEN 8 = 12' X 16'

ASC OF MONTANA FARM TRIALS

June 14th AM/PM CATTLE

- TIME LIMITS ARE 20 MIN WITH A WARNING AT 10 MIN
- SET OUT DOG MAY BE USED
- 8 RUNS 4 AM/4 PM CATTLE
- All ties will be determined by dogs control at gather and drive
- Run Order day of show

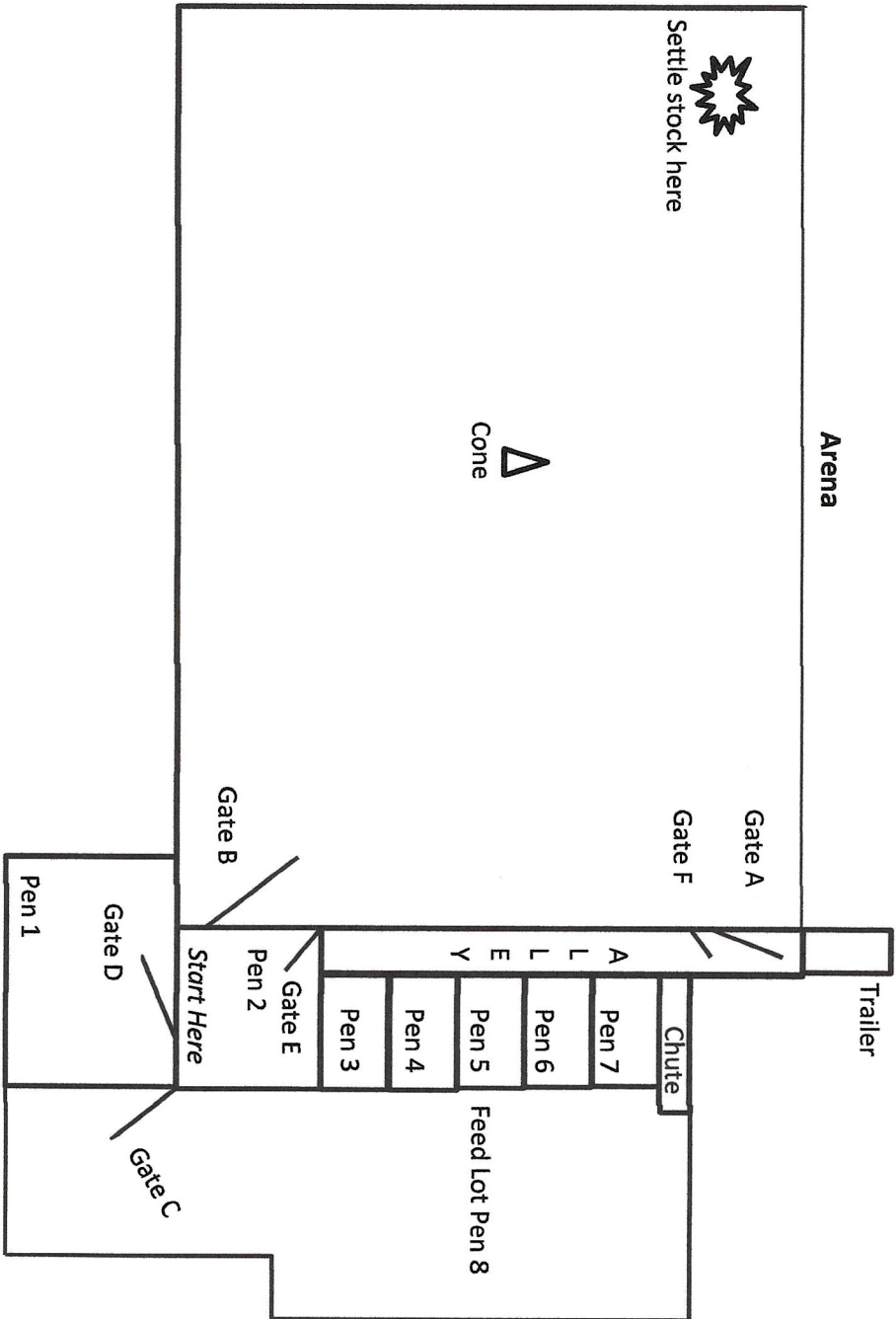
ASC of Montana Cattle Farm Trial # 1 Description

1. Time starts when handler and dog enter pen 2.
2. Move cows from pen 2 through gate E into Alley pen. (5 points)
3. Move 5 head of cows down alley to gate F then down chute open gate to feed lot pen 8. (20 points)
4. Move cows from pen 8 down to gate C and into pen 1 advanced handlers send dog from gate C open handlers may walk pen and fetch to gate C. (10 points)
5. Gate sort 3 marked cows from pen 1 and move to pen 2 through gate D. Then move the 3 marked cows to Alley pen through gate E. Return to pen 1 and move 2 remaining cows to pen 2 through gate D and move through gate E to rejoin the other 3 cows. (25 points)
6. Move the 5 cows down alley through gate F and load trailer. (20 points)
7. Change gates and remove cows from trailer and move into arena through gate A. Then drive (open may fetch) the stock to designated northwest corner of the arena. (Advanced handlers must stay behind center line of arena.) Settle the stock and recall your dog to gate A. (20 points)
8. Walk down Alley back to gate B
9. Open gate B and gather five head from arena and place in pen 2 through gate B. Open handlers can move about the arena up to the center cone. Advanced handlers send dog from gate to pen 2. (20 points)
10. Move cows from pen 2 into Alley pen through gate E. (5 points)
11. Move cows down Alley into empty pen 3-7 holding pens. Time stops when gate is closed. (5 points)
12. After time has stopped and run is over remove dog from area and handler only take next group of cows from holding pen 3 to 7 and move then to pen 2 for next run to start.

ASC of Montana Cattle Farm Trial # 2 Description

1. Time starts when handler and dog enter pen 2.
2. Move the 5 cows through gate E down Alley through gate F and load trailer. (20 points)

3. Change gates and remove cows from trailer and move into arena through gate A. Then drive (open may fetch) the stock to designated east corner of the arena. (Advanced handlers must stay behind center line of arena.) Settle the stock and recall your dog to gate A. (20 points)
4. Walk down Alley back to gate B
5. Gather five head from arena and place in pen 2 through gate B. Open handlers can move about the arena up to the center cone. Advanced handlers send dog from gate to pen 2. (20 points)
6. Move stock from pen 2 into alley through gate E (5 points)
7. Move 5 head of cows down alley to gate F then down chute open gate to feed lot pen 8. (20 points)
8. Move cows from pen 8 down to gate C and into pen 1 advanced handlers send dog from gate C open handlers may walk pen and fetch to gate C. (10 points)
9. Gate sort 3 marked cows from pen 1 and move to pen 2 through gate D and close gate. Return to pen 1 and move 2 remaining cows to pen 2 through gate D to rejoin the other 3 cows. (25 points)
10. Then move all five cows from pen 2 into Alley pen through gate E. (5 points)
11. Move cows from alley into empty holding pen 3 to 7 time stops when gate is closed. (5 points)
12. After time has stopped and run is over remove dog from area and handler only take next group of cows from holding pen 3 to 7 and move then to pen 2 for next run to start.



Pen/Gate	Size
Arena	150' x 200'
Pen #1	40' X 40'
Pen #2	24' x 24'
Pens* #3-#7	16' x 16'
Alley	8' x 120'
Chute	4' x 25'
Pen #8	150' x 32'-40'
Gate A	16'
Gate B	16'
Gates C-F	8'
Cone at	75' x 100'
Center of arena	
* Holding Pens	

Cattle Farm Trial Course Diagram

ASC of Montana 2024 Donations



Yes, I would like to support ASC of Montana and help offset the costs of the trial and awards.

- Donations are accepted via separate check made payable to ASC of Montana. Please write "donation" in memo area.
- Please submit this form and check with your registration.

Donor Name: _____

Amount: _____

Signature: _____

Please apply my donation to: _____

Thank you for your support of ASC of Montana. We strive to provide some of the finest Stock Dog Trials in the Country. With support from our participants and Club Members we can offer high quality awards and buckles that recognize the Teams (Handler and Dogs) that participate in our events.

Good Dogs-Good Stock-Good People



AUSTRALIAN SHEPHERD CLUB OF AMERICA®

Stock Trial Entry Form

PLEASE PRINT OR TYPE ALL INFORMATION CLEARLY

Entry Number

Host Club	
Trial Dates	

Registration/Tracking #: _____ Breed: _____

Registered Name: _____ Color: _____

DOB: _____ Sex: Male Female

Call Name: _____

Sire: _____

Dam: _____

Breeder(s): _____

Owner(s): _____

Owner Address: _____

City: _____ State: _____ Zip: _____

Email: _____ Phone: _____

Handler: _____

(If other than owner) Membership Number: _____ Junior DOB: _____

(Enter Junior Member ID# if JR is handling dog) (If Junior is handling dog)

	Date		Date		Date		Date		
	STD	OPN	FTD	FTD	Trial #1	Trial #2	Trial #1	Trial #2	
Sheep									
Cattle									
Ducks									
Mixed									
	NOV	Work- Hndlr	FEO	Post Adv	RTD	Trial #1	Trial #2	Trial #1	Trial #2
Sheep									
Cattle									
Ducks									
Total Entry Fees									\$

Emergency Contact Name & Number: _____ EXHIBITOR/OWNER OR PARENT/LEGAL GUARDIAN (IF JR IS UNDER 18) MUST READ AND SIGN THIS FORM

AGREEMENT

IMPORTANT LEGAL AGREEMENT—Please read the following carefully as it, among other things, may prevent you from suing ASCA® and persons/entities affiliated with it. This agreement could even require you to defend them from demands and suits by third parties that include an assessor of wrongdoing by you. (1) The person signing this Agreement represents being authorized to enter into it on behalf of himself, as well as (if different) the owner(s)/exhibitor(s)/handler(s) of the dog(s) for which an entry form is being submitted (all these parties collectively referred to herein as "Applicant"). (2) "Releasees" here collectively refers to the Australian Shepherd Club of America® (ASCA®), its affiliate clubs, and the officers and board of directors, staff, contractors, insurers, attorneys, and agents of ASCA® and of those clubs. (3) This Agreement voluntarily is entered into by Applicant in exchange for the acceptance of the associated entry form and permission to participate in related activities. (4) Applicant agrees to abide by the rules and regulations of ASCA® and any other rules and regulations applicable to this event. (5) Applicant certifies that the entered dog will not pose a hazard to people, property, stock animals, or other dogs, and further that the dog is current with rabies shots along with any other vaccinations required by its state of residence. (6) Applicant acknowledges and assumes the risks to Applicant and Applicant's dog associated with participation in the event, among which could be ones associated with poor condition of the facilities and surrounding areas; security measures or lack of them; electrical appliances; fittings; show rings; the presence of unfamiliar persons; and the presence/involvement of other animals—whether stock, dogs, or otherwise. (7) Applicant further agrees to comply with all recommended and required health and safety precautions, among which may be those related to social distancing; quarantining; wearing of face coverings; and non-participation of persons exhibiting symptoms or for whom there otherwise has been a likelihood of recent exposure associated with taking part in the event though others might neglect compliance with health and safety precautions/requirements or pose an undue risk of spreading disease. For example, as is true as to any public event, there is some risk that Applicant and/or those affiliated with Applicant may catch COVID-19 or another contagious disease at the event. (8) To the maximum extent permissible, this release is to be interpreted under Texas law, without application of its choice of law rules. (9) To the extent that Applicant—or another party suing on behalf of Applicant, or suing to recover based on injuries/death/damage to Applicant/Applicant's dog/Applicant's property—sues ASCA® (or a board member or staff member or agent of ASCA®) as a defendant, the sole appropriate forum (to the maximum extent permitted by law) for the suit shall be the state or federal courts serving Brazos County, Texas (where ASCA® has its headquarters). (10) Applicant hereby releases and waives any claims Applicant otherwise might assert against the Releasees as to any injury or damage claim connected in any way to any alleged act or omission arising out of, or occurring concurrent with, the event and related activities, interactions, communications, and even adjacent premises. (11) This release is made not only as to Applicant but also for anyone who might assert a claim on behalf of Applicant or based on purported injury or damage to Applicant/Applicant's dog/Applicant's property, as well as any heir, beneficiary, assignee, executor, trustee, agent, or survivor of Applicant. (12) Applicant further agrees to assume sole responsibility for and indemnify, release, and indemnification provisions extend even to claims or demands asserting that the acts or omissions resulted in bodily injury or death or from intentional wrongdoing, as well as to attorney fees and other costs of defense. (13) The duties of indemnification further extend to any claims or demands asserted against Releasees that are alleged to have arisen out of the acts or omissions of Applicant, Applicant's dog, or others affiliated with Applicant. Among other things, this means that Applicant would pay the legal defense of Releasees if someone sued them based on a claim Applicant carelessly exposed the claimant to COVID-19. (14) Applicant's promises in this agreement apply without regard to the type of claim or cause of action asserted against Releasees. (15) To the extent any provision of this agreement is unenforceable, the remainder of it nonetheless is to be enforced. (16) This agreement is to be interpreted to provide Releasees with the maximum permissible legal protection from—among other things—claims and suits pursued by Applicant (and/or those acting on behalf of Applicant or over injury/damage to Applicant), as well as from ones based on the purported wrongful acts or omissions of Applicant. (17) Nothing in this Agreement requires you to indemnify Releasees from claims by third parties that involve no allegations of improper acts or omissions by you, those affiliated with you, nor your dog(s). (18) Applicant acknowledges having read, understood, and had the opportunity for independent legal review of this document prior to signing it.

Date: _____

SIGNATURE OF OWNER/HANDLER OR PARENT/LEGAL GUARDIAN (IF JR IS UNDER 18)
PERSON SIGNING THIS FORM IS RESPONSIBLE FOR ALL ERRORS AND RULE VIOLATIONS

AS USED HERE, "ASCA®" MEANS THE OWNER AND THE OPERATOR OF THE EVENT PREMISES, THE AUSTRALIAN SHEPHERD CLUB OF AMERICA, ITS AFFILIATE CLUBS, AND EACH OF THEIR MEMBERS, OFFICERS, DIRECTORS, EMPLOYEES, SHOW CHAIRMEN, SHOW COMMITTEES AND AGENTS.

October 8, 2020